

# Timberland IV



## Cape Cod w/Unfinished 2nd Floor

The Timberland IV home adds a 12/12 roof, double dormers, and stair access so you can expand your potential living area. You have the option to finish the second floor whenever is suitable for your family. If your need for more room grows, you have the option to create the upstairs to your personal liking.

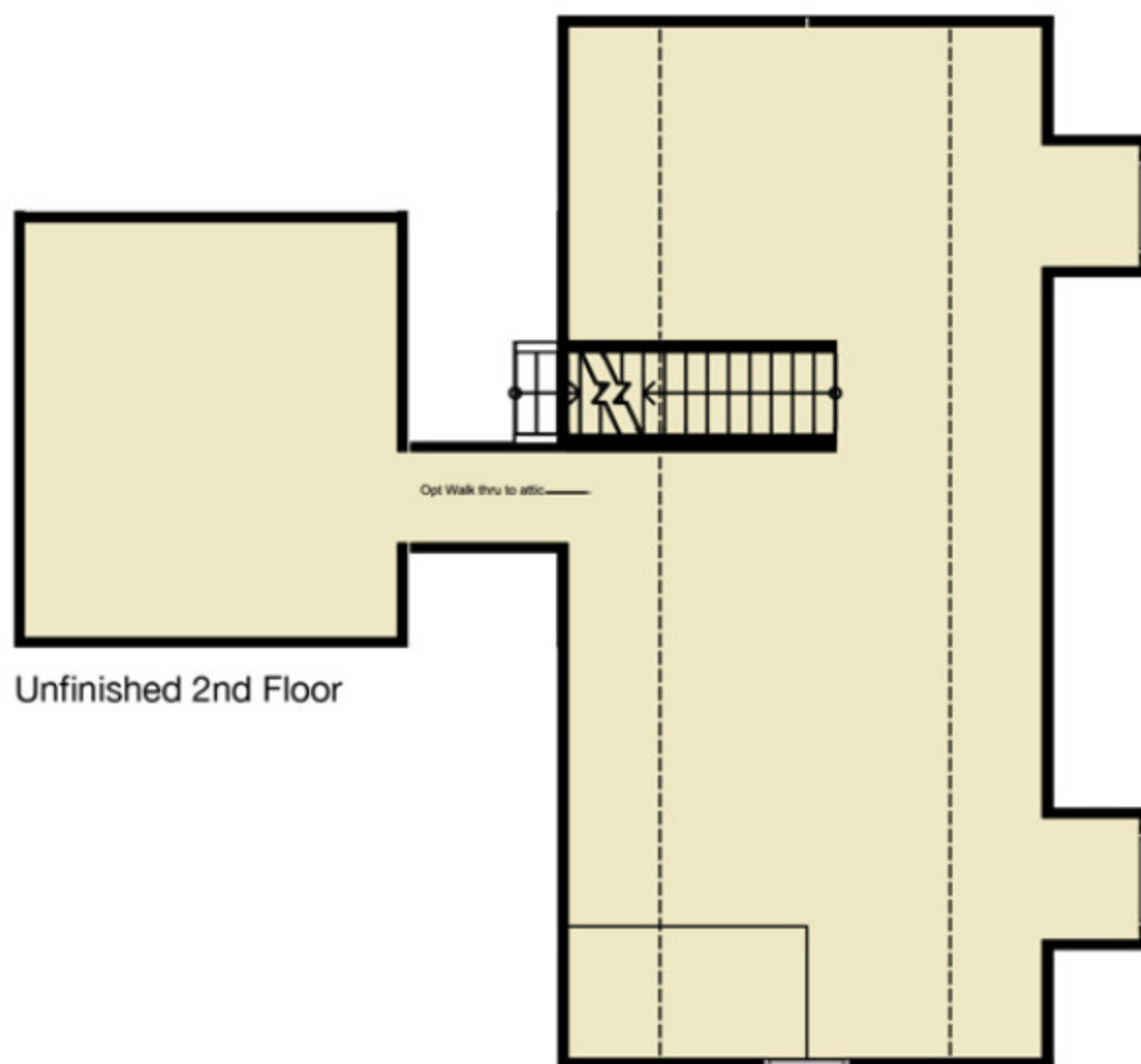
The timber framed front porch is an ideal place for enjoying those summer days and provides a classic style that will make your house distinct from the rest of the neighborhood.

### Features:

- ▶ 1,496 Finished Sq. Ft.
- ▶ 864 Unfinished Sq. Ft.
- ▶ 3 Bedrooms
- ▶ 2 Baths
- ▶ Family/Dining Room
- ▶ Living Room
- ▶ Utility Room



1st Floor



Unfinished 2nd Floor